

### 3 On-Vehicle Service Operations

## ATTENTION

All fasteners are important attaching parts as they affect the performance of vital components and/or could result in major repair expense. Where specified in this Section, fasteners **MUST** be replaced with parts of the same part number or an approved equivalent. Do not use fasteners of an inferior quality or substitute design.

Torque values must be used as specified during reassembly to ensure proper retention of all components.

Throughout this section, fastener torque wrench specifications may be accompanied with the following identification marks:

- Fasteners must be replaced after loosening.
- Vehicle must be at curb height before final tightening.
- ◆ Fasteners either have micro encapsulated sealant applied or incorporate a mechanical thread lock and should only be re-used once. If in doubt, replacement is recommended.

If one of these identification marks is present alongside a fastener torque wrench specification, the recommendation regarding that fastener must be adhered to.

### 3.1 Fluid Change and Filter Replace

#### Remove

- 1 Raise the vehicle and support in a safe manner. Refer to [Section 0A General Information](#) in this Service Information for the location of recommended lifting and support points.
- 2 Place a suitable drain pan under the transmission fluid drain plug.

## WARNING

**Wear eye protection and protective clothing to prevent scalding from hot automatic transmission fluid.**

- 3 Remove and discard the transmission fluid drain plug (2) and seal.
- 4 Allow the transmission fluid to drain.
- 5 Inspect the transmission fluid for discoloration and contamination while draining.
- 6 After the fluid has stopped draining, install a NEW transmission drain plug (2) and seal, then tighten the plug to the correct torque specification.

Drain plug torque specification ..... 20 Nm

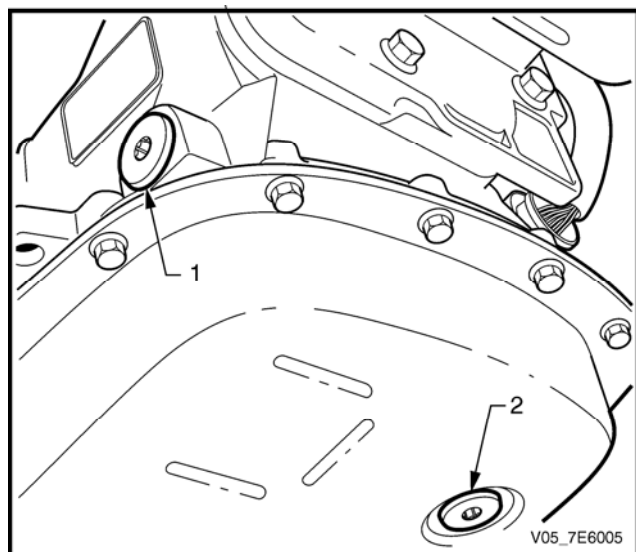


Figure 7E4 – 3

- 7 Remove the fluid pan bolts.

**CAUTION**

The fluid pan will retain a residual quantity of fluid that can splash, as will the fluid draining from the transmission components

- 8 Lightly tap the fluid pan (2) with a rubber mallet if necessary, to loosen.  
9 Remove the fluid pan (2) and the gasket (4).

**NOTE**

The fluid pan gasket is re-usable, if undamaged.

- 10 Clean and inspect the following for damage or wear;  
a Magnet (1)  
b Fluid pan (2)  
c Bolts (3)  
d Fluid pan gasket (4)

**CAUTION**

Do not lose the fluid filter neck spacer, following the filter removal.

- 11 Remove the fluid filter (1). Use a long screwdriver to prise the fluid filter neck from the seals in the fluid pump housing.

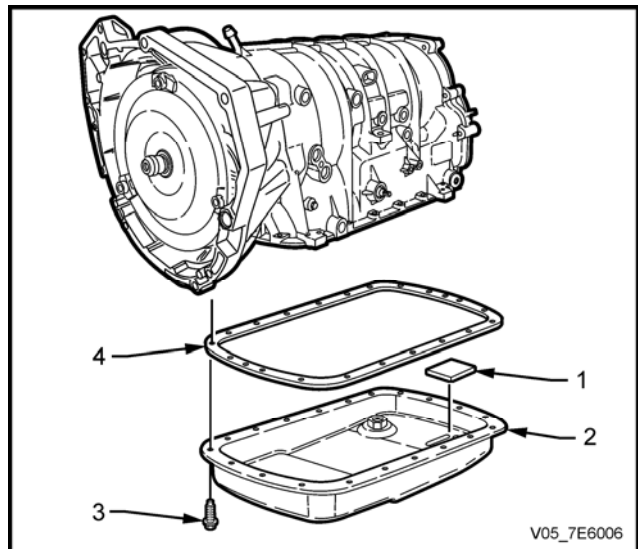


Figure 7E4 – 4

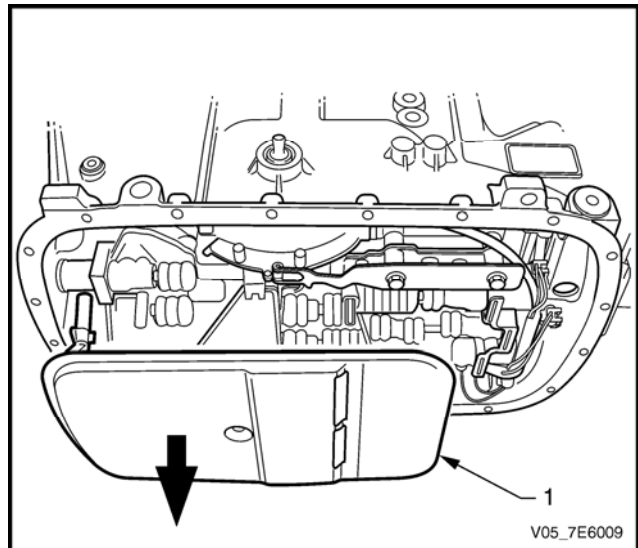


Figure 7E4 – 5

- 12 Using slide hammer, Tool No. J 6125-1B and remover J 23129, remove the two filter neck seals (57) from the transmission case. Discard the removed seals.

**NOTE**

If the filter is not being replaced, then removal of the seals is not necessary

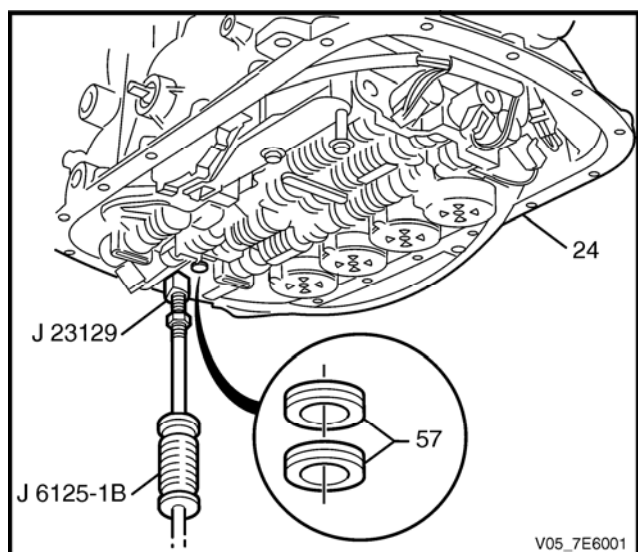


Figure 7E4 – 6

## Reinstall

- 1 Coat the two 2 fluid filter seals (1) (supplied with a replacement filter assembly) with petroleum jelly (e.g. Vaseline™ or equivalent), then install into the transmission fluid filter neck.

### CAUTION

**Do not install the fluid filter without the spacer sleeve being fitted to the filter neck.**

- 2 Install a NEW transmission fluid filter (2) and spacer sleeve into the case.

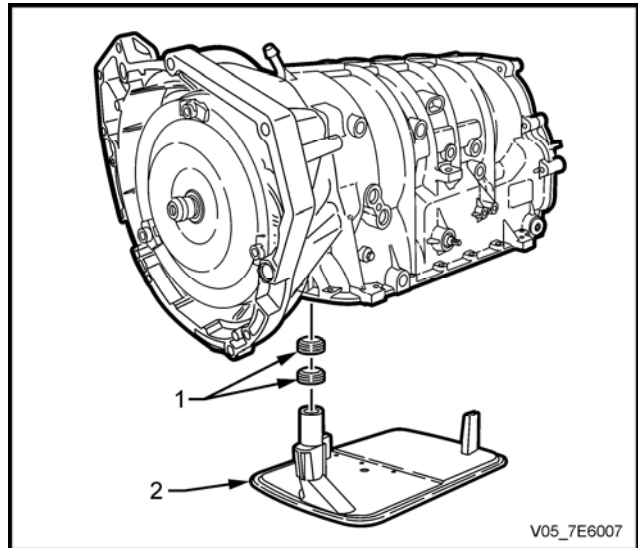


Figure 7E4 – 7

- 3 After checking that the magnet (1) is in the correct position in the fluid pan (2), install the fluid pan (2) and the gasket (4) at the same time.
- 4 Reinstall the fluid pan bolts (3), tightening to the correct torque specification.

Fluid pan bolt torque specification..... 11 Nm
--

- 5 Fill the transmission to the correct level. Refer to [2.1 Transmission Fluid Check](#) procedure, in this Section.
- 6 Lower the vehicle to the ground.
- 7 Inspect the oil pan gasket for leaks.

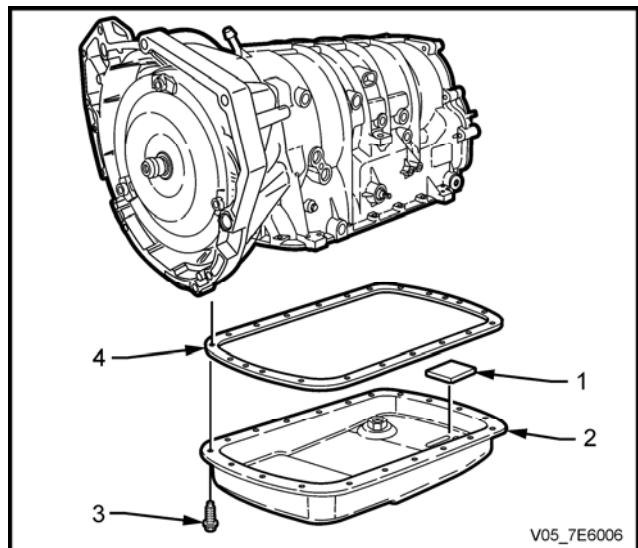


Figure 7E4 – 8