

Engine Oil Pressure Sensor and/or Switch Replacement (L77 or LS3)

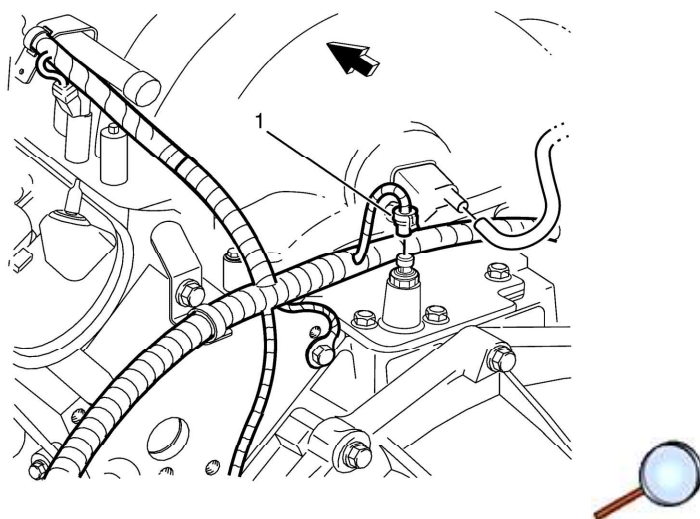
Tools Required

J 41712 Oil Pressure Switch Socket

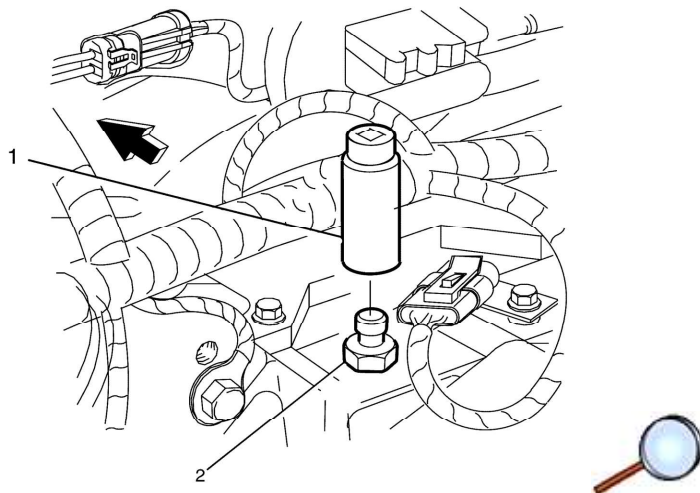
For equivalent regional tools, refer to [Special Tools](#).

Removal Procedure

1. Remove the air inlet grille panel. Refer to [Air Inlet Grille Panel Replacement](#).



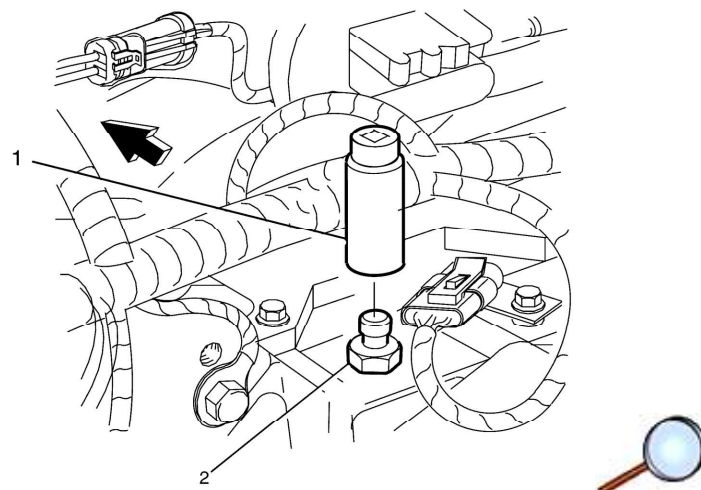
2. Disconnect the oil pressure sensor wiring harness connector (1).



Note: Clean the area around the oil pressure sensor (2) before removal. This prevents debris from entering the engine.

3. Use the J 41712 oil pressure switch socket (1) to remove the oil pressure sensor (2).

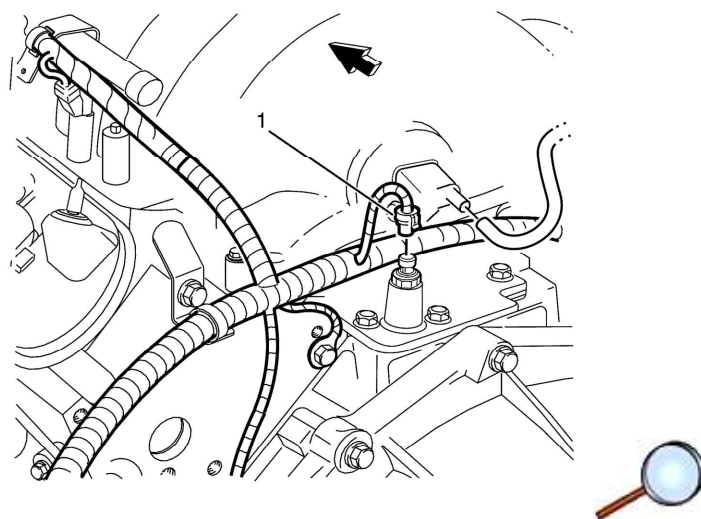
Installation Procedure



Caution: Refer to [Fastener Caution](#).

Note: If installing the old oil pressure sensor (2), apply sealant GM P/N 12346004 (Canadian P/N 10953480) or equivalent to the cleaned oil pressure sensor (2) thread.

1. Install the oil pressure sensor (2) using the J 41712 oil pressure switch socket (1) and tighten to **35 N•m (26 lb ft)**.



2. Connect the oil pressure sensor electrical connector (1).
3. Install the air inlet grille panel. Refer to [Air Inlet Grille Panel Replacement](#).