

3.25 Front Body Harness – 2

GEN III V8 Engine – Engine Compartment

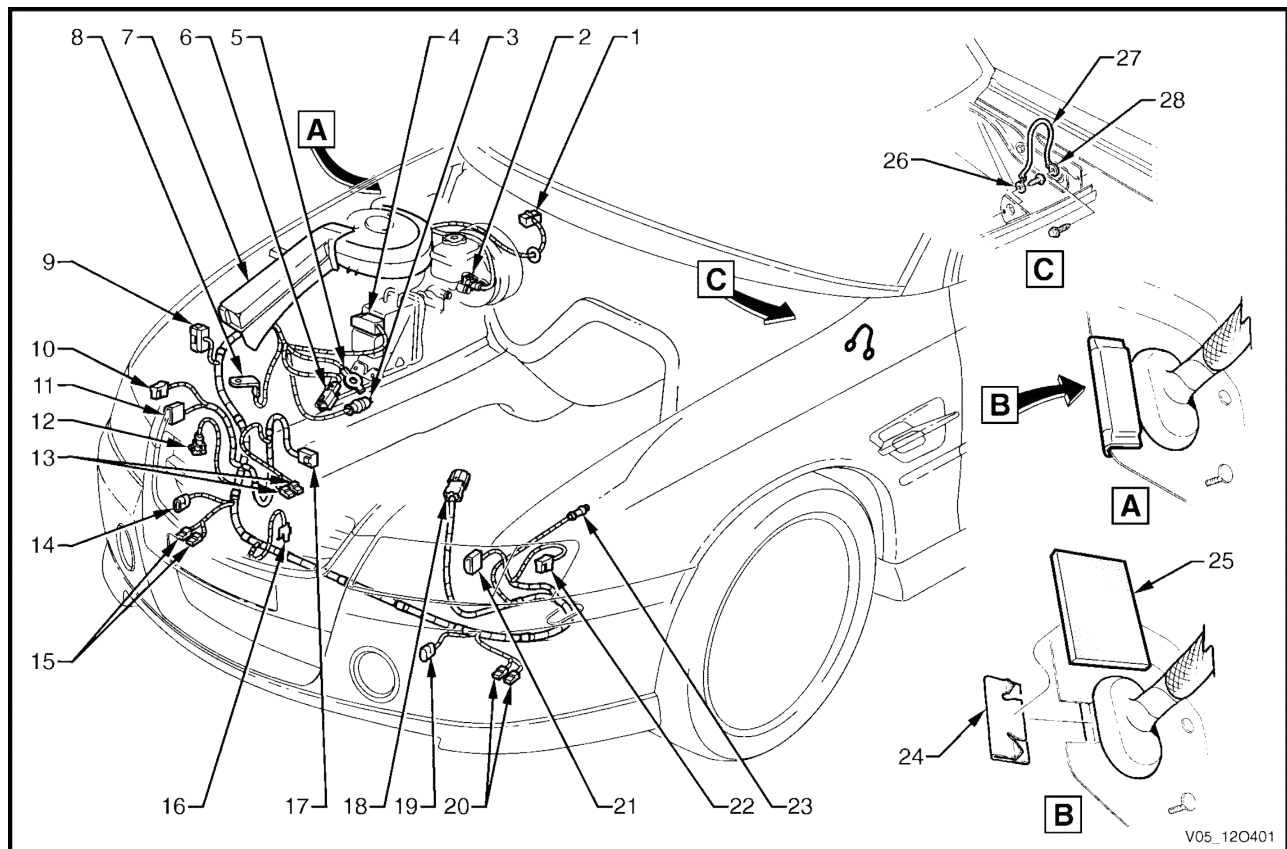


Figure 120 – 64

Legend

- | | | | |
|----|---------------------------------------------------------------|----|--------------------------------------------------------------|
| 1 | Windshield Wiper Motor Connector (M17) | 16 | Ambient Air Temperature Sensor Connector (B23) |
| 2 | Brake Fluid Level Indicator Switch Connector (S36) | 17 | Engine Cooling Fan Connector (M7 – X1) |
| 3 | Front Wheel Speed Sensor Connector (B52 – R) | 18 | Front Body Harness to Powertrain Harness Connector (X101) |
| 4 | Electronic Brake and Traction Control Module Connector (A37) | 19 | Fog Lamp Connector (E69 – L) |
| 5 | Body Ground Terminal (X119 – G3 – GP3) | 20 | Horn Connectors (B9) |
| 6 | Front Body Harness to Battery Wiring Harness Connector (X106) | 21 | Headlamp Connector (E119 – L) |
| 7 | Front Body Harness Junction Connector (X100) | 22 | Turn Signal Lamp Connector (E76 – L) |
| 8 | Fusible Link Supply Connector (X86 – A) | 23 | Front Wheel Speed Sensor Connector (B52 – L) |
| 9 | Ground Connector (X157) | 24 | Sealing Patch Grommet |
| 10 | Turn Signal Lamp Connector (E76 – R) | 25 | Grommet Insert |
| 11 | Headlamp Connector (E119 – R) | 26 | Instrument Panel to Body Ground Strap Terminal (X118 – GP9) |
| 12 | Windshield Washer Motor Connector (M19) | 27 | Body to Instrument Panel Ground Strap |
| 13 | Hood Theft Deterrent Switch Connectors (S135) | 28 | Body to Instrument Panel Ground Strap Terminal (X119 – GP10) |
| 14 | Fog Lamp Connector (E69 – R) | | |
| 15 | Horn Connectors (B9) | | |