

## 4.2 Front Door Outer Handle Assembly

### LT Section — 11-360

#### Remove

- 1 Remove the trim panel assembly, refer to 3.1 Front Door Trim Panel.
- 2 Remove the trim panel bracket (1), three places, from the inner panel (2) by levering out the centre pin of each bracket.
- 3 Carefully peel off the water shield (3) from the inner panel.

#### NOTE

The water shield only need to be partly removed to allow access to complete this procedure.

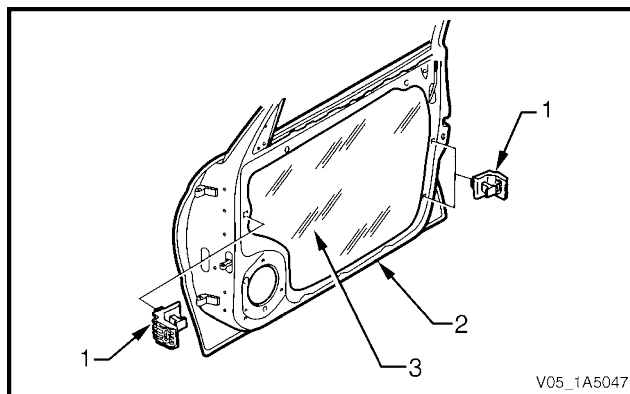


Figure 1A5 – 33

- 4 For the outer handle assembly on the driver's side, proceed as follows:
  - a Disconnect the lock cylinder rod (1) from the lock assembly (2) by releasing the lock cylinder rod retainer (3).
  - b Disconnect the wiring harness from the lock micro-switch wiring harness connector (4).

#### NOTE

The outer handle bracket assembly (7) on the driver's side consists of a micro-switch, a door lock cylinder and a bracket.

- 5 Remove the two nuts (5) attaching the outer handle assembly.
- 6 Remove the front door outer handle (6) and bracket (7) assemblies.

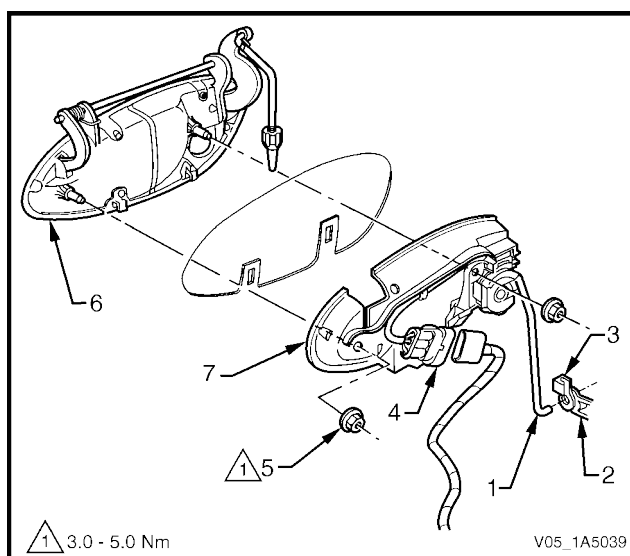


Figure 1A5 – 34

## Disassemble – Driver's Side

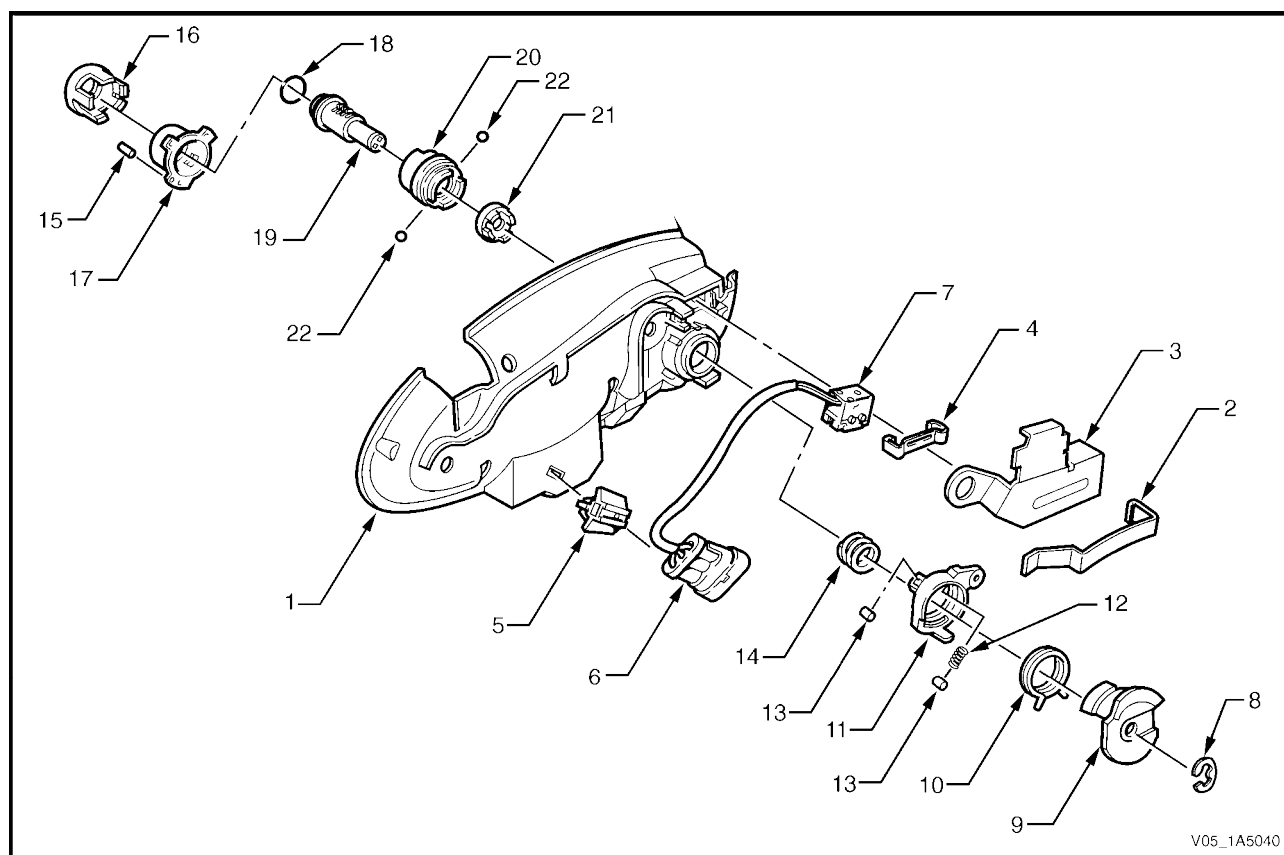


Figure 1A5 – 35

### Legend

- |  |                              |
|--|------------------------------|
| 1 Front Door Outer Handle Bracket                      | 12 Lock Lever Roller Spring  |
| 2 Lock Barrel Shield Clip                              | 13 Lock Lever Roller         |
| 3 Lock Barrel Shield                                   | 14 Lock Clutch Thrust Spring |
| 4 Lock Micro Switch Clip                               | 15 Lock Barrel Housing Pin   |
| 5 Micro Switch Wiring Harness Connector Retaining Clip | 16 Lock Barrel Housing Cover |
| 6 Micro Switch Wiring Harness Connector                | 17 Lock Barrel Housing       |
| 7 Lock Electric Micro Switch                           | 18 Lock Cylinder O-ring      |
| 8 Lock Barrel Clip                                     | 19 Lock Cylinder Assembly    |
| 9 Lock Micro Switch Control Cam                        | 20 Lock Barrel Sleeve        |
| 10 Lock Torsion Spring                                 | 21 Lock Clutch Coupling      |
| 11 Lock Lever  | 22 Lock Clutch Balls         |

- 1 From the back of the outer handle bracket (1), using a small screwdriver gently remove the lock barrel shield clip (2).
- 2 Remove the lock barrel shield (3).
- 3 Using a small screwdriver, gently remove the lock micro switch clip (4) away from the outer handle bracket.

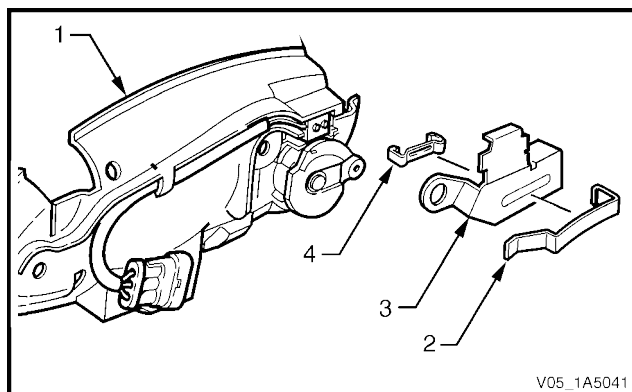


Figure 1A5 – 36

- 4 Slide the micro switch wiring harness connector (1) off the retaining clip (2) and free the wiring harness out from under the outer handle bracket retainer (3).

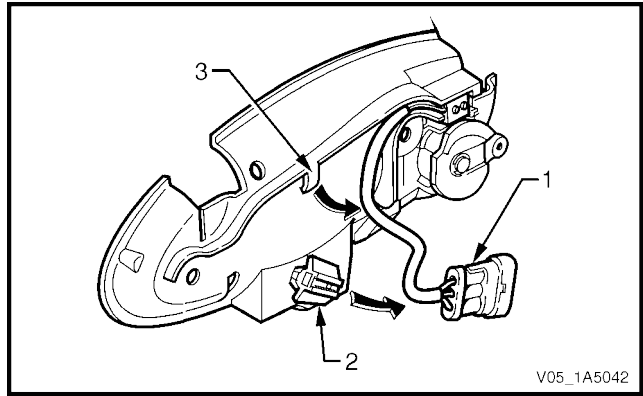


Figure 1A5 - 37

- 5 Using a small flat bladed screwdriver, push in the two contacts of the lock electric micro switch (1) and remove the lock electric micro switch and connector assembly.

**NOTE**

To test the micro-switch, refer to [Section 12J Body Control Module](#).

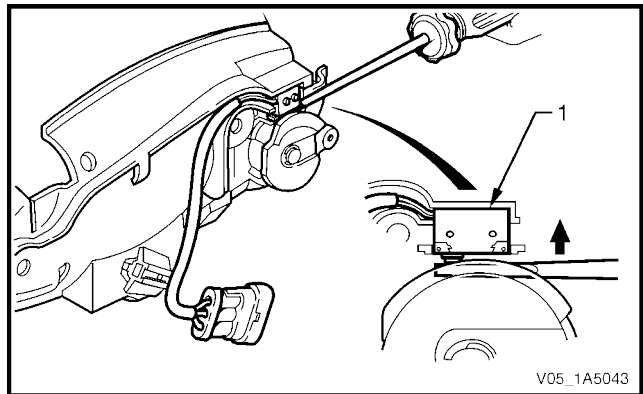


Figure 1A5 - 38

- 6 Remove the lock barrel shield clip (1) and slide the lock micro switch control cam (2), lock torsion spring (3) and lock lever (4) away from the lock assembly.

**NOTE**

Take care not to lose the lock lever roller spring (5) and the two lock lever rollers (6) during this procedure.

- 7 Remove the lock clutch thrust spring (7) from the lock assembly.

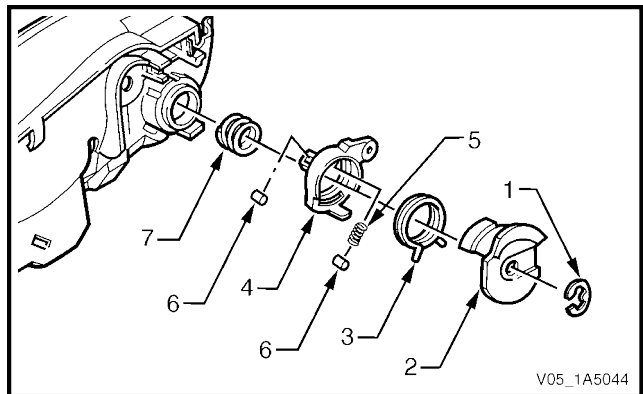


Figure 1A5 - 39

- 8 Using a suitable pair of pliers, pull the lock barrel housing pin (1) out of the outer handle bracket (2).

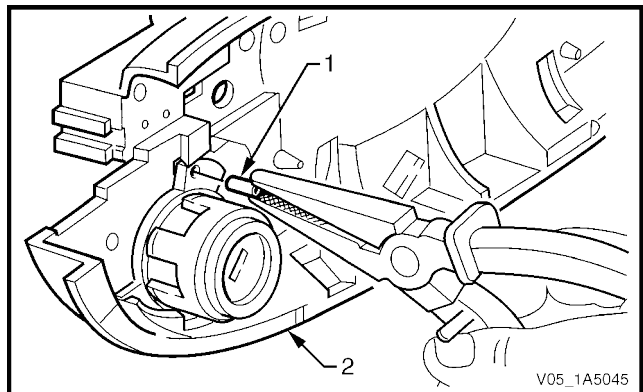


Figure 1A5 - 40

- 9 Rotate in an anti-clockwise direction and remove the housing cover (1), housing (2), O-ring (3), cylinder assembly (4), sleeve (5) and clutch coupling (6) from the outer handle bracket (7).

#### NOTE

Take care not to lose the two lock clutch balls (8) during this procedure.

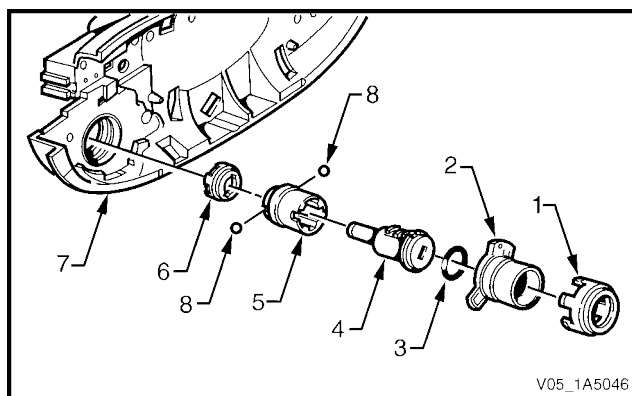


Figure 1A5 – 41

### Reassemble – Driver's Side

Reassembly of the front door outer handle assembly is the reverse of the removal procedure, noting the following:

#### NOTE

Lock cylinder service replacement kits are supplied un-coded, which facilitates re-coding of the lock cylinder to match the original key. It is recommended the overhaul and re-coding of the lock cylinder is performed by an authorised locksmith.

- 1 Ensure the two lock clutch balls are fitted when installing the lock barrel sleeve and the O-ring is not damaged.
- 2 Rotate the parts in a clockwise direction when installing the lock barrel housing cover, housing, cylinder assembly, sleeve and clutch coupling.
- 3 Ensure the two lock lever rollers and roller spring are fitted when installing the lock lever.

### Reinstall

Reinstallation of the front door outer handle assembly is the reverse of the removal procedure, noting the following:

- 1 Ensure the adjusting nut (1) is seated in the lock and actuator assembly (2) before installing the two attaching nuts (3).
- 2 Tighten the two nuts attaching the outer handle assembly to the correct torque specification.

Front door outer handle assembly attaching nuts torque specification.....3.0 – 5.0 Nm
---

- 3 Check and if necessary rotate the adjusting nut to allow the latch disengagement with the striker when the outer handle opening (4) is  $18^\circ \pm 5^\circ$  from the rest position.

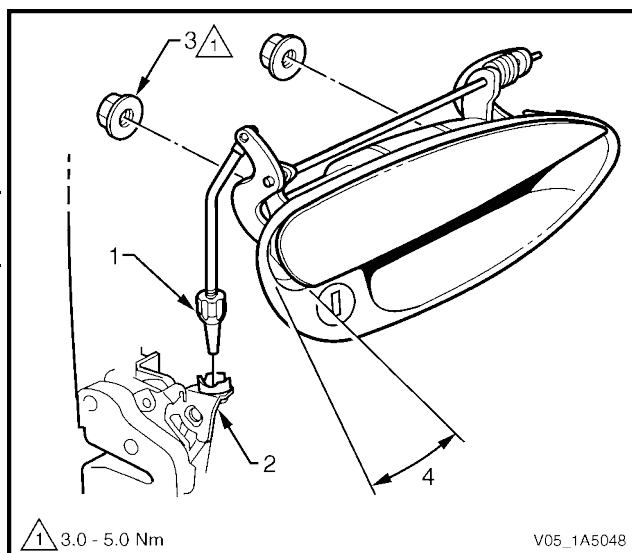


Figure 1A5 – 42